



Hemnall Street, Epping, CM16

BUTLER & STAG



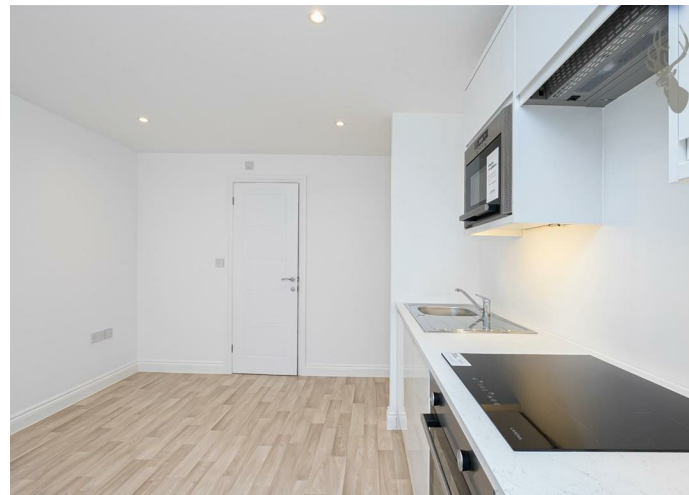
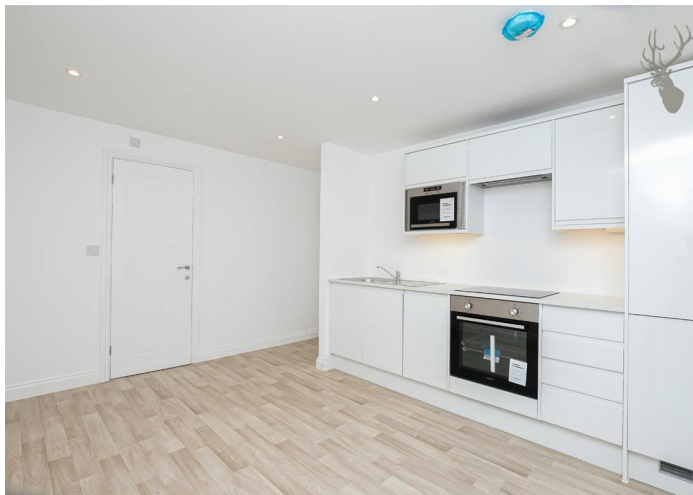
One of Five compact, One bedroom apartments located in the heart of Epping High Street.

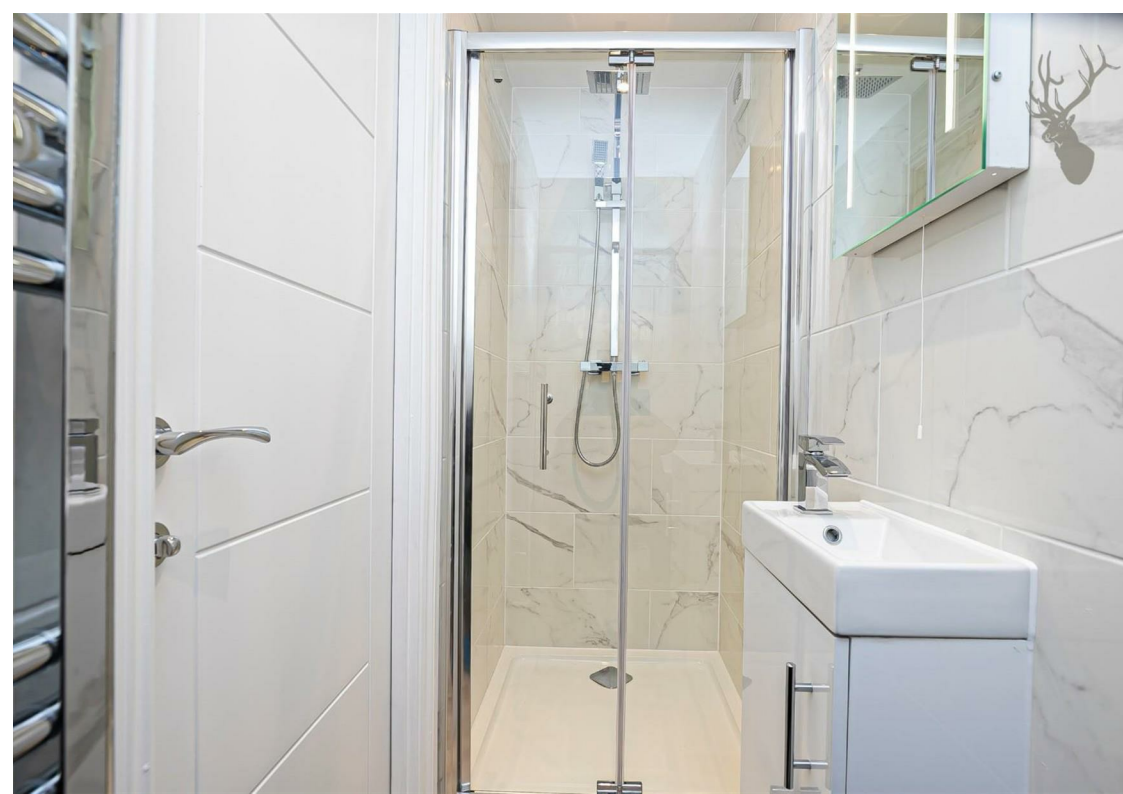
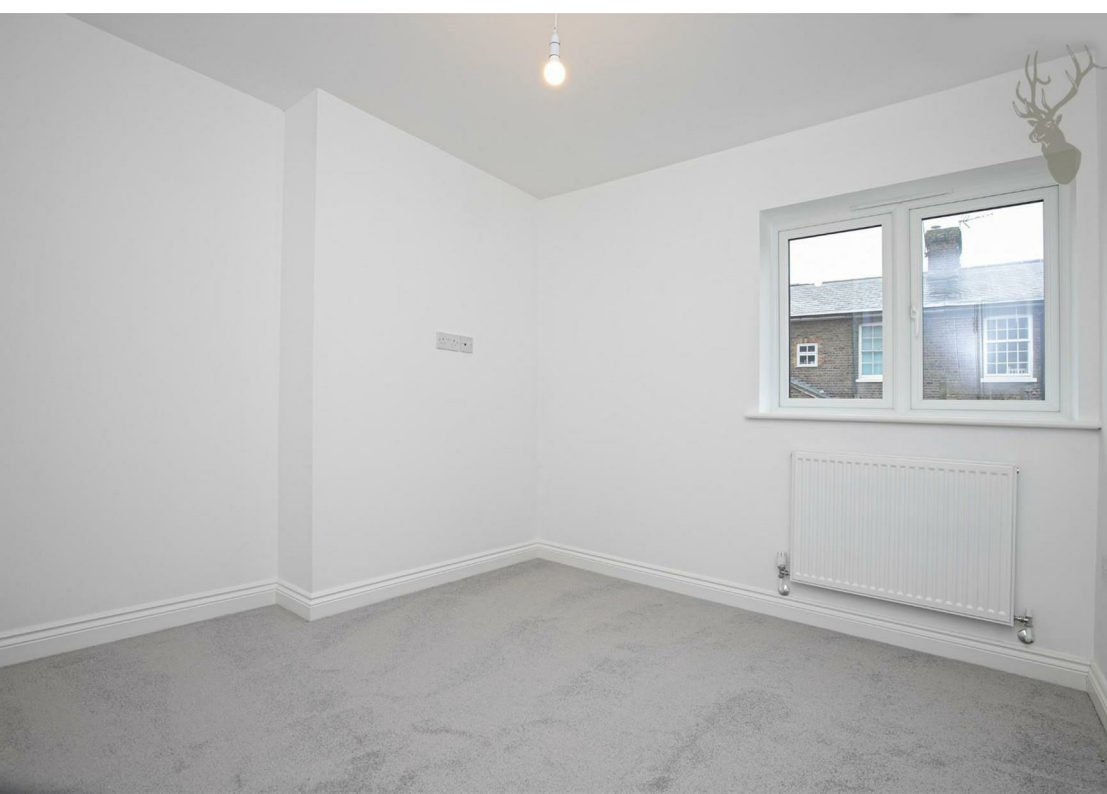


- Approved for Help To Buy Scheme
- One Bedroom
- 10 year NHBC warranty
- Open plan living room/kitchen
- Secure Entry System
- Private Communal Garden

The apartments have been designed thoughtfully with a modern, busy lifestyle in mind. They include one double bedroom, fully-fitted kitchen with appliances, fitted shower rooms and a communal garden.

Feel connected to every part of the electric lifestyle Epping has to offer. Clasper House stands in the very heart of the town centre, meaning you are a short stroll away from all the bars, restaurants and shops the community has to offer. As a cultural hub, Epping has great links to London via the Central Line and motorways nearby, making it easy to work and socialise in the capital.

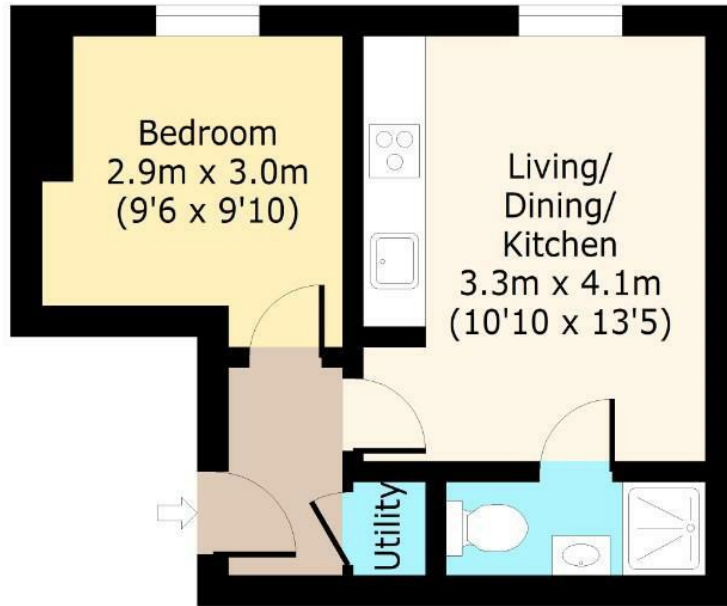




Clasper House,

Ground Floor

Approx. 28.15 Sq. meters (303 Sq. feet)



Total area: approx. 28.15 Sq. meters (303 Sq. feet)

For illustration purposes only - not to scale

www.lpaplus.com

IMPORTANT NOTICE - These particulars have been prepared in good faith and they are not intended to constitute part of an offer or contract. We have not performed a structural survey on this property and the services, appliances or specific fittings have not been tested. All photographs, measurements, floor plans and distances referred to are given as a guide and should not be relied upon.

BUTLER & STAG

☎ 01992 667666

🏠 4 Forest Drive, Theydon Bois, Essex, CM16 7EY

✉ theydon@butlerandstag.com

www.butlerandstag.uk